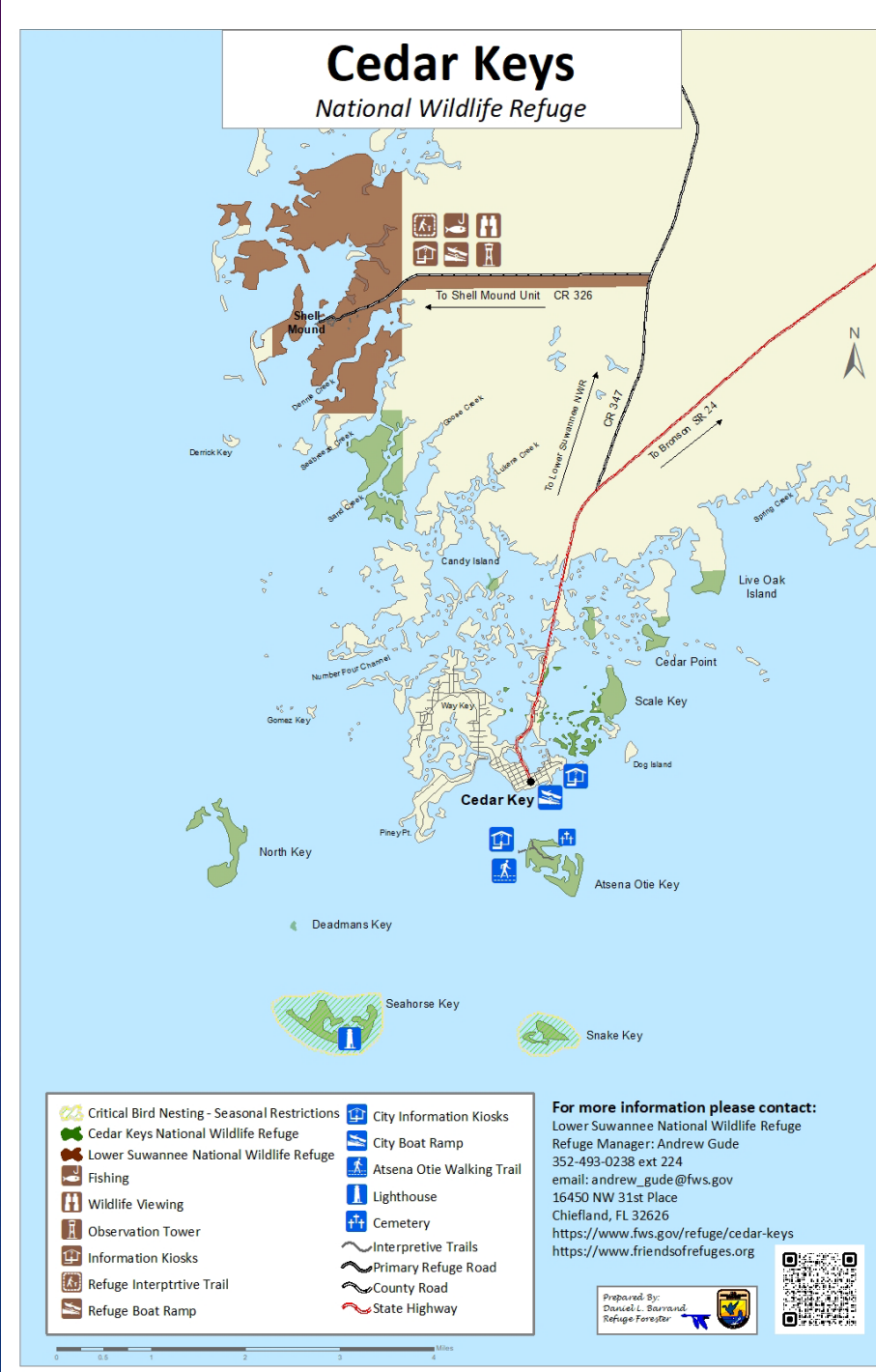
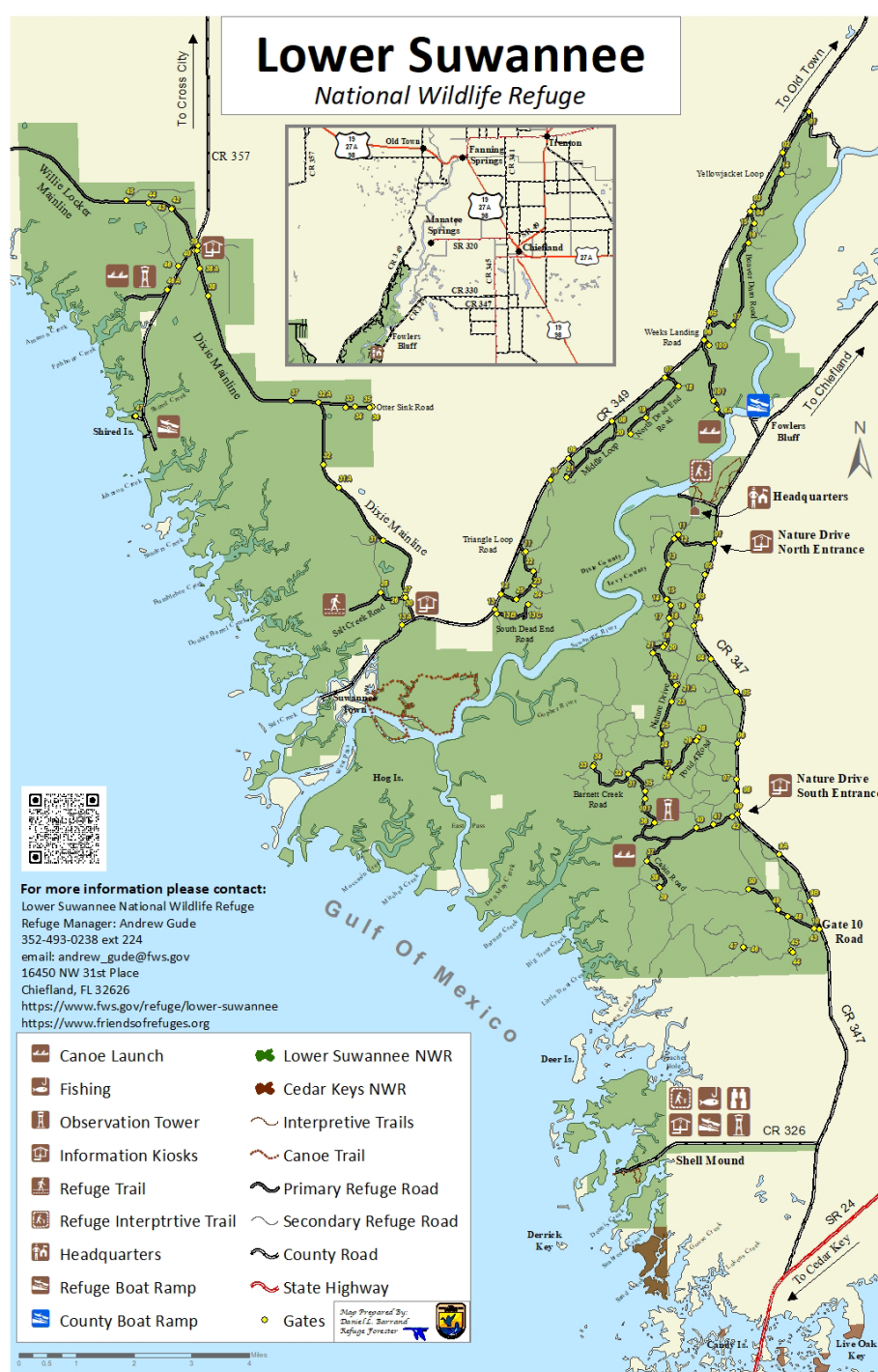


REFUGE UPDATE 2022

Andrew Gude
Refuge Manager



Nearly, almost, maybe, hopefully post-COVID





PUBLIC USE

Friends Website & Maps Page

New Refuge maps

Friends: Self-guided approach

Disabled hunter & angler access

Pollinator accommodations

Shellmound Pier and Seahorse Dock

Pier rebuild

Fishbone Creek Access

Cabin and Barnett Creek Roads

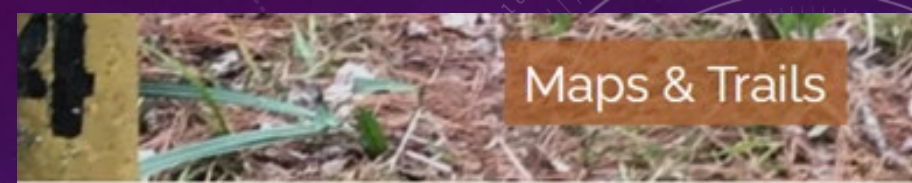
Shired Island

River Trail & Boardwalk

11 different hunt seasons

Operation Outdoor Freedom Hunt

Diversity Hunt



Maps & Trails

Paddling Guides

Routes and interesting locations you will see as you explore isolated wonders of the refuges—some only accessible by paddling. These downloadable parcels are free for your personal use. They are copyrighted by Friends and may not be sold or used for any commercial purpose without permission of Friends.



Public Use Information	CR 357	CR 349	CR 326	CR 24
Canoe Launch	Yes	Yes	Yes	Yes
Fishing	Yes	Yes	Yes	Yes
Observation Tower	Yes	Yes	Yes	Yes
Information Kiosk	Yes	Yes	Yes	Yes
Refuge Trail	Yes	Yes	Yes	Yes
Refuge Interpretive Trail	Yes	Yes	Yes	Yes
Headquarters	Yes	Yes	Yes	Yes
Refuge Boat Ramp	Yes	Yes	Yes	Yes
County Boat Ramp	Yes	Yes	Yes	Yes
Lighthouse	Yes	Yes	Yes	Yes
Pond	Yes	Yes	Yes	Yes
Bridge	Yes	Yes	Yes	Yes
Gate	Yes	Yes	Yes	Yes
Trails	Yes	Yes	Yes	Yes
Canoe Trail	Yes	Yes	Yes	Yes
Creek	Yes	Yes	Yes	Yes
Primary Refuge Road	Yes	Yes	Yes	Yes
Secondary Refuge Road	Yes	Yes	Yes	Yes
Trail Primary Refuge	Yes	Yes	Yes	Yes
Trail Secondary Refuge	Yes	Yes	Yes	Yes
State Highway	Yes	Yes	Yes	Yes
Cedar Keys NWR Closed Areas	Yes	Yes	Yes	Yes
Cedar Keys NWR	Yes	Yes	Yes	Yes
Lower Suwannee NWR	Yes	Yes	Yes	Yes

Paddling Guides

1. Fishbone Creek
2. Shired Creek
3. Sanders Creek
4. Cat Island
5. Lock Creek
6. Lock and Shingle Creek
7. Gopher River
8. Sandily Creek
9. Barnett and McCormick Creek
10. Shell Mound to Hog Island
11. Shell Mound to Long Cabbage
12. Atsena Oble

Behind the Gates

Behind the gates you sometimes find the best hiking, cycling, and wildlife observation. You are welcome to explore any of the former logging roads but please do not block the gate with your car in case a refuge vehicle or equipment needs access. Most are mowed regularly. Ticks and winged bling insects can be abundant.

Maps

OVERVIEW MAPS

- Interactive Refuge Map
- Lower Suwannee NWR Map
- Escape to the Refuge Video

GEOSPATIAL MAPS

Import these into the Avenza app for offline use on your mobile phone.

Instructions:

- Levy County side
- Dixie County side
- Lock-Shingle Creek Paddling Trail

Trail Brochures

POPULAR LOOPS AND TRAILS

- Adventures on the Refuges
- Dennis Creek Trail
- Dixie Mainline- FWS Guide
- Dixie Mainline-Hiking Trails
- Nature Drive Guide
- River Walk-Tram Ridge Trail
- Shell Mound Trail

LONGER TRAILS

- Barnett Creek Trail
- CR 349 Refuge Cycling Tour
- Turkey Foot Loop Trail



Public Facilities Maintenance



FORESTRY – HABITAT RESTORATION





Rx FIRE

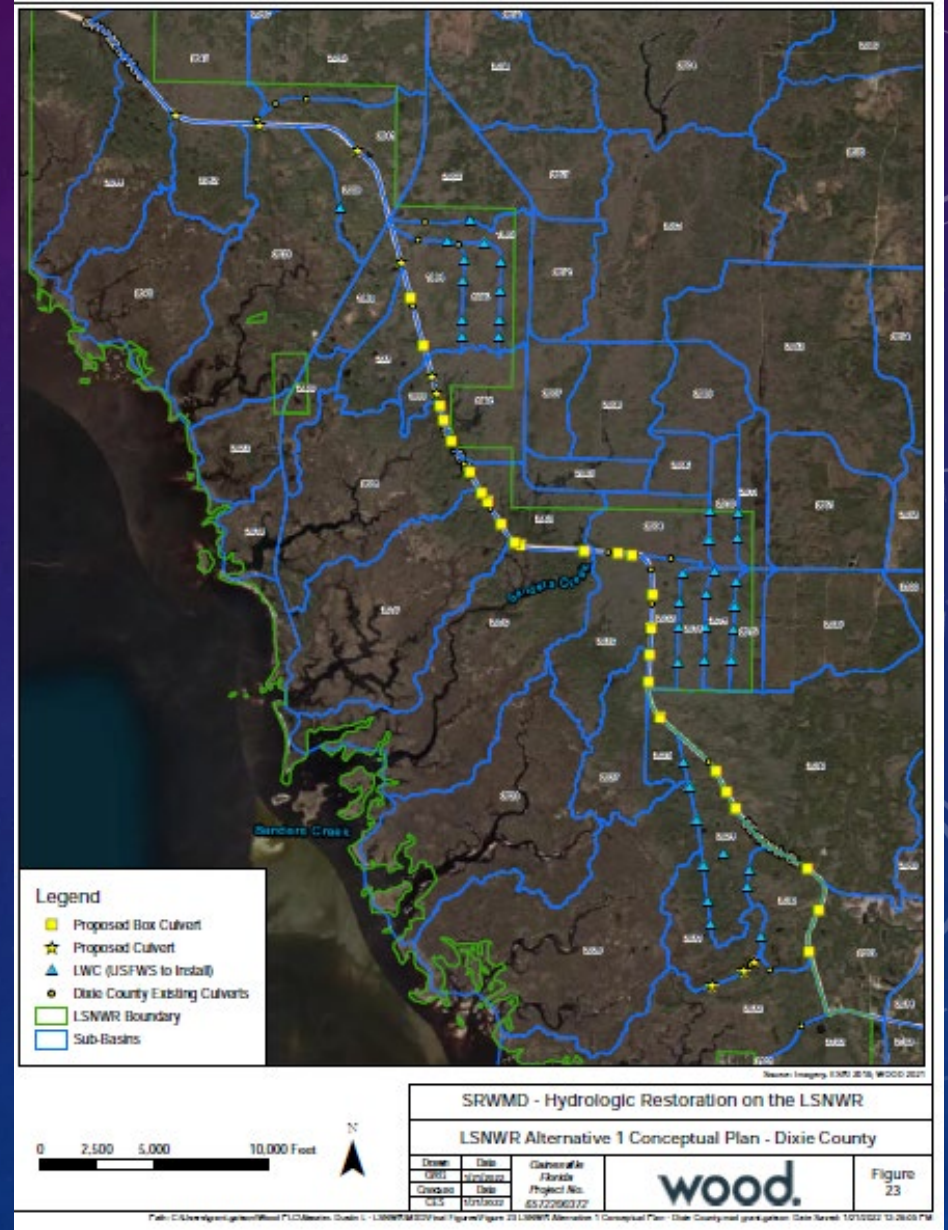
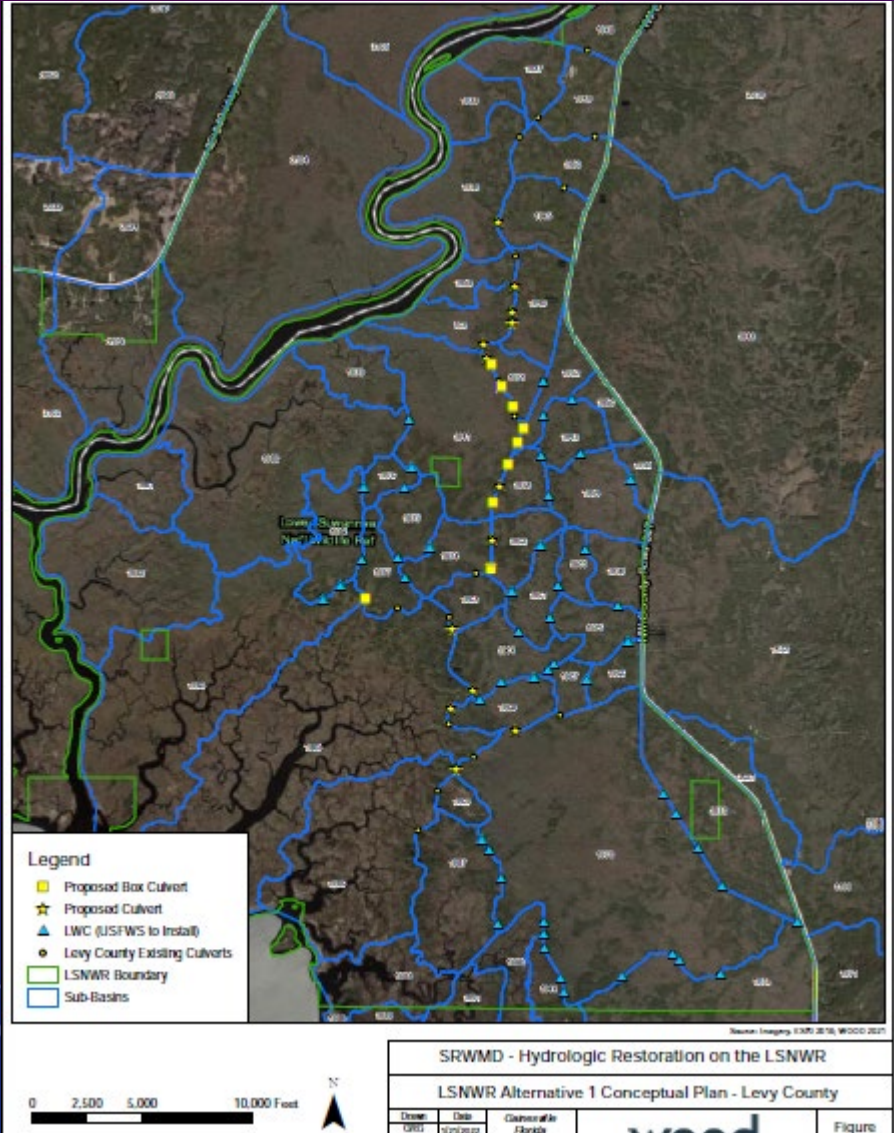
Vista Estate Transfer

Property Assessment

Resident Volunteers



HYDROLOGIC RESTORATION E&D



LAW ENFORCEMENT



Seahorse Key Open Houses



REFUGE STAFF



Come Celebrate – Two for One....

Vic & Ron's Retirement Bash

A combined career of 89 years (OK – Ron carried most of that load)



Preceded by a Friends of Refuges Reception

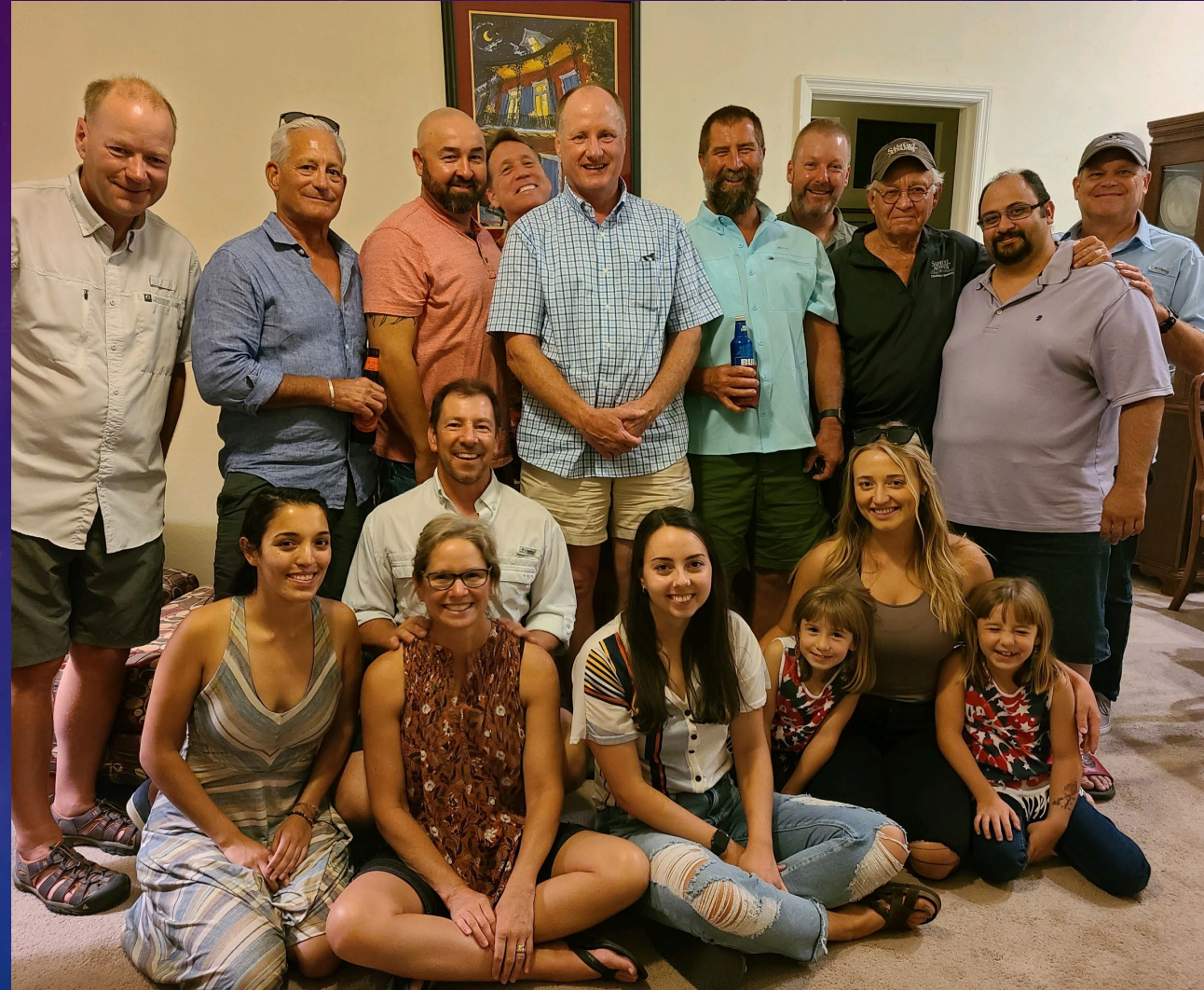
Friday January 21st, 2022; 5 pm

Cedar Key Community Center

809 6th Street, Cedar Key, FL

- Appetizers and light dinner
- Some beverages provided, or bring your own if you're picky!
- Dancing at your own Risk!!

Please RSVP and send any incriminating photos to Andrew_Gude@fws.gov by January 14th
Any Questions, Contact Andrew; 703-622-3896, or Jane.Doig@yahoo.com; 352-226-2232



VOLUNTEERS





Friends Support

- Vista
- Pollinators
- Public outreach
- Broad Membership = Community Support