

Keeping the Dixie Mainline Open

Jason Coates, Engineering Equipment Operator/Ranger

March, 2017



History of the Mainline Road



Private
hunting access
• 1940-1998

Partially
acquired and
maintained by
LSNWR
• 1979

All 9 miles
open to the
public
• 1998



Lower Suwannee National Wildlife Refuge est. April 10, 1979.

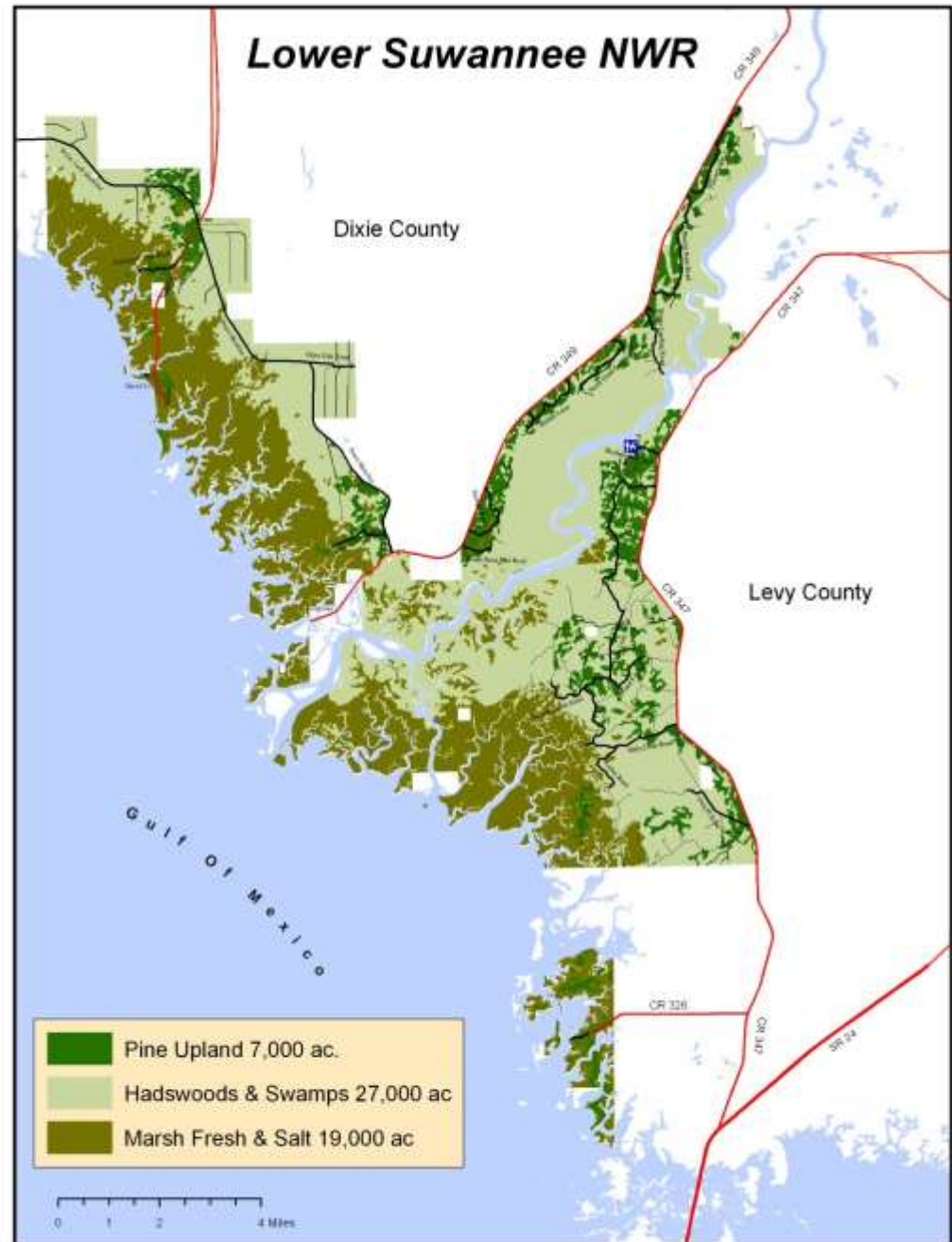
Lands acquired from timber companies and private parties for over 36 years

Present size - 53,000 acres.

Also, manage ~2,000 acres of land for other parties.

20 miles of Suwannee River.

30 miles of Gulf Coast marsh and islands (including Cedar Keys NWR).



Opportunity





Restore Old Florida Habitat

- Controlled burns
- Invasive plant control
- Plant native trees



Why so many rules?



Maintenance and Improvements



Refuge	Roads(mi.)	Gates	Culverts
Dixie County	86	57	49
Levy County	108	57	65
Total	194 miles	114	114



Before Trimming



After Trimming

Damage by Nature



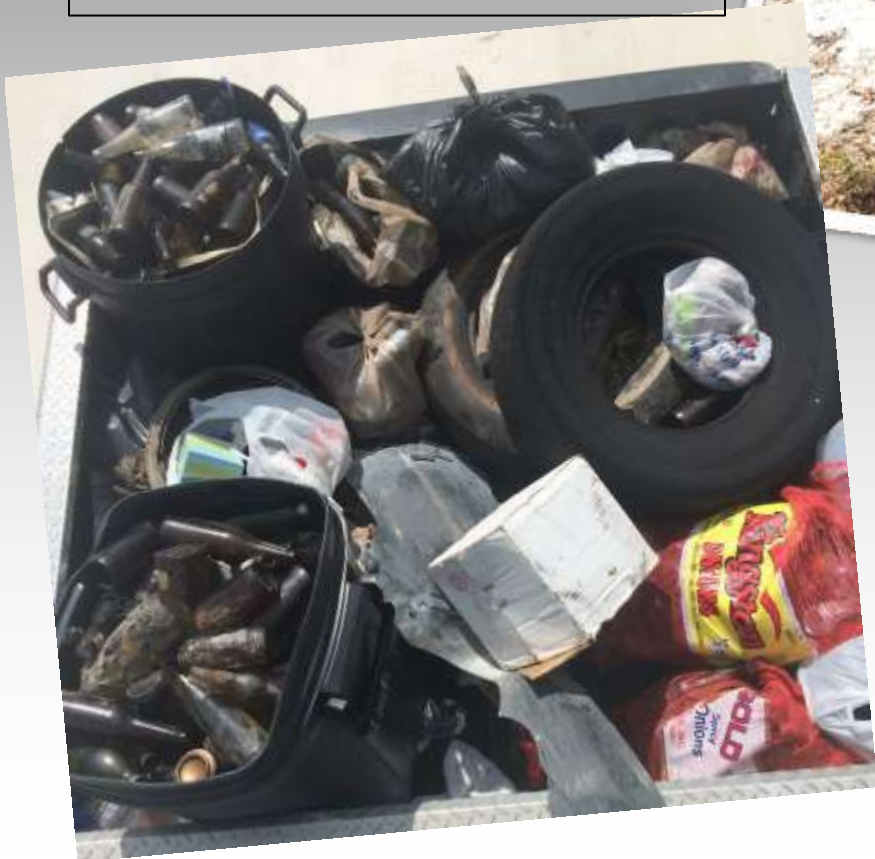


Vandalism

LITTER

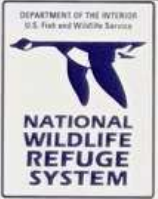
YEARLY

160 bags trash
4,491 aluminum cans
12 tires





Lower Suwannee National Wildlife Refuge



Help us protect our critical natural resources.
This past year, **littering** and **vandalism** has
cost the taxpayers

\$34,360.00

Just to clean up and repair damages!

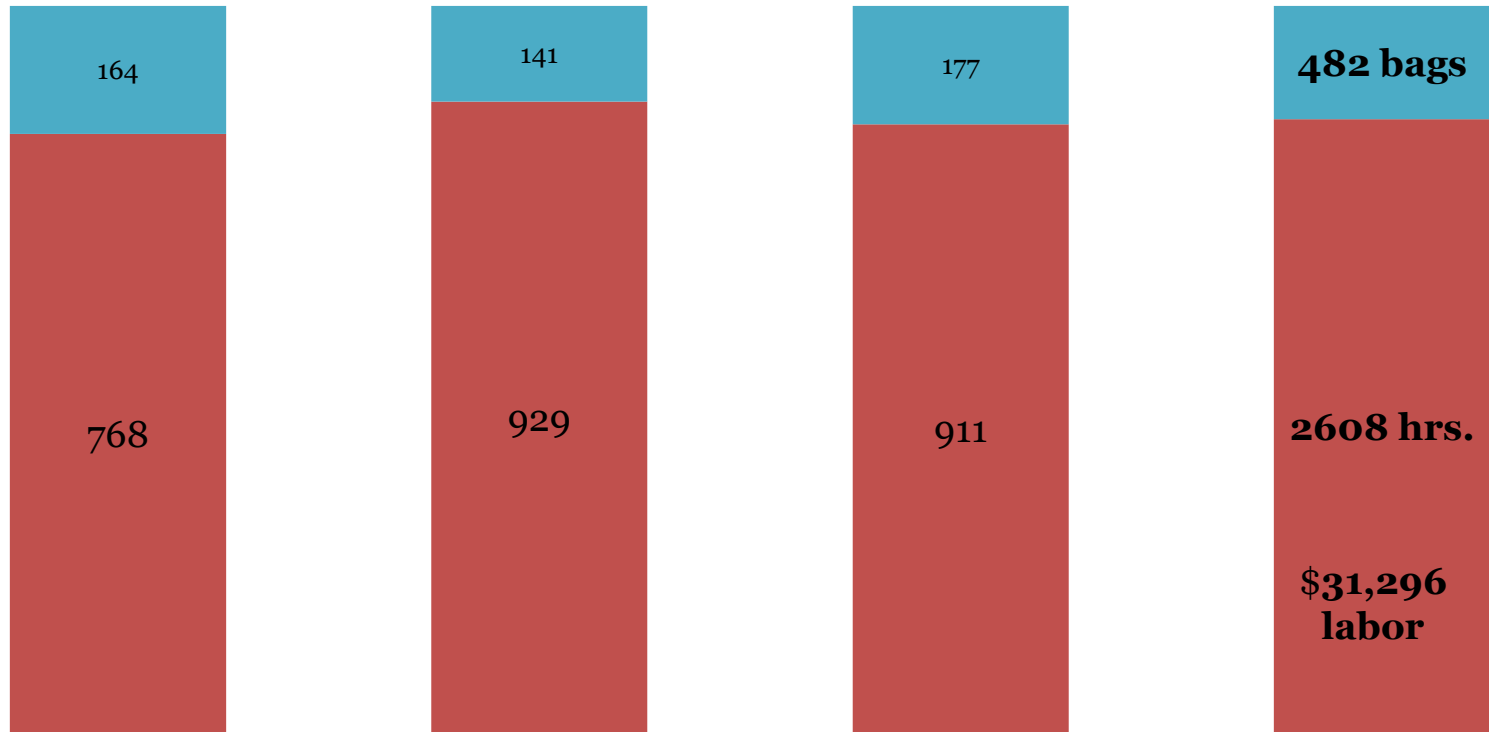


VOLUNTEERS



Volunteer Hours and Trash Removed in 3 Years

■ Hours Worked ■ Trash Bags Collected



4 1/2 Months

2015

3 Months 3 Days

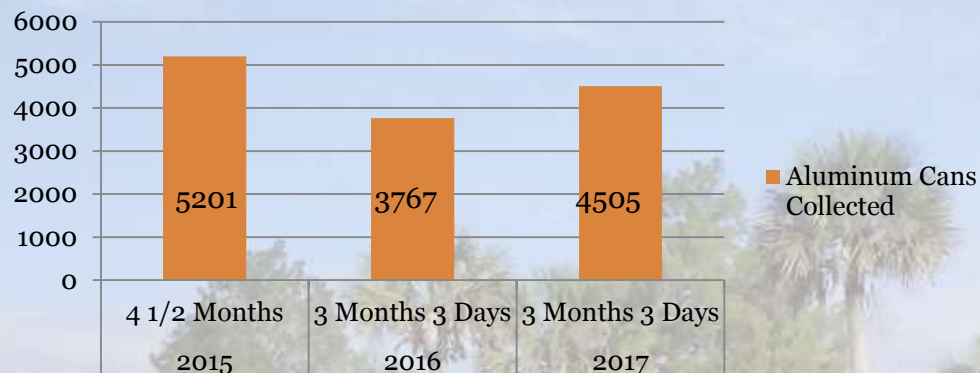
2016

3 Months 3 Days

2017

Total

Aluminum Cans Collected **8272 CANS**



Miles Driven by Refuge Volunteers Over 3 Years **4853 Miles**



Visitor Contacts by Volunteers Over 3 Years **527 Contacts**



QUESTIONS

Jason Coates
352-614-2022

